

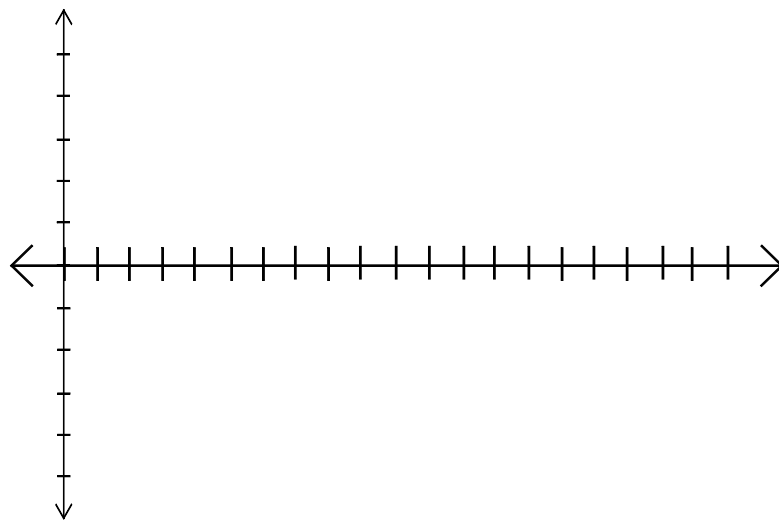
10.2 Graphs of $y = a \sin bx$ and $y = a \cos bx$

Review : Important values for sketching
 $y = a \sin bx$ and $y = a \cos bx$

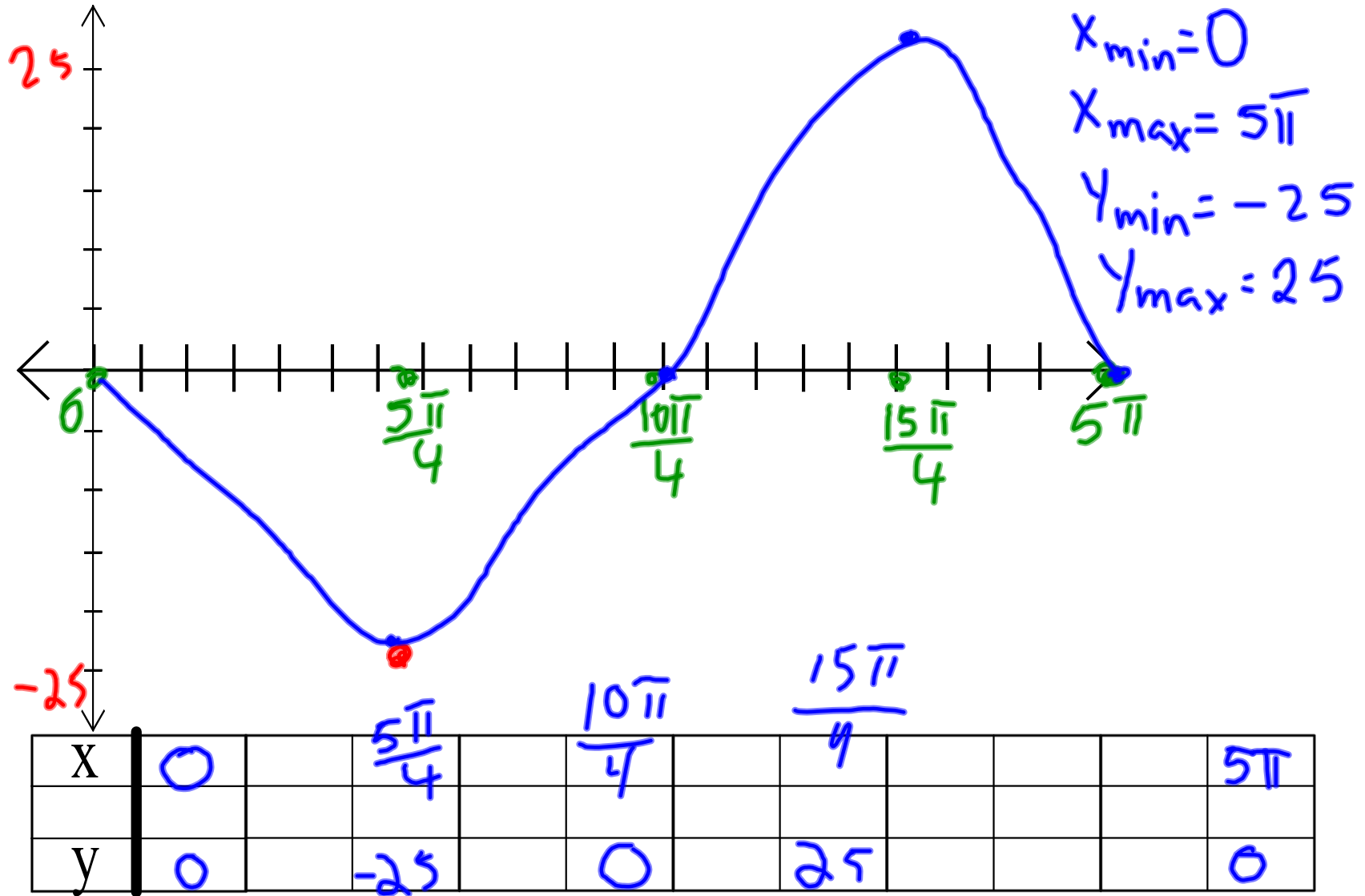
1. Amplitude = $|a|$

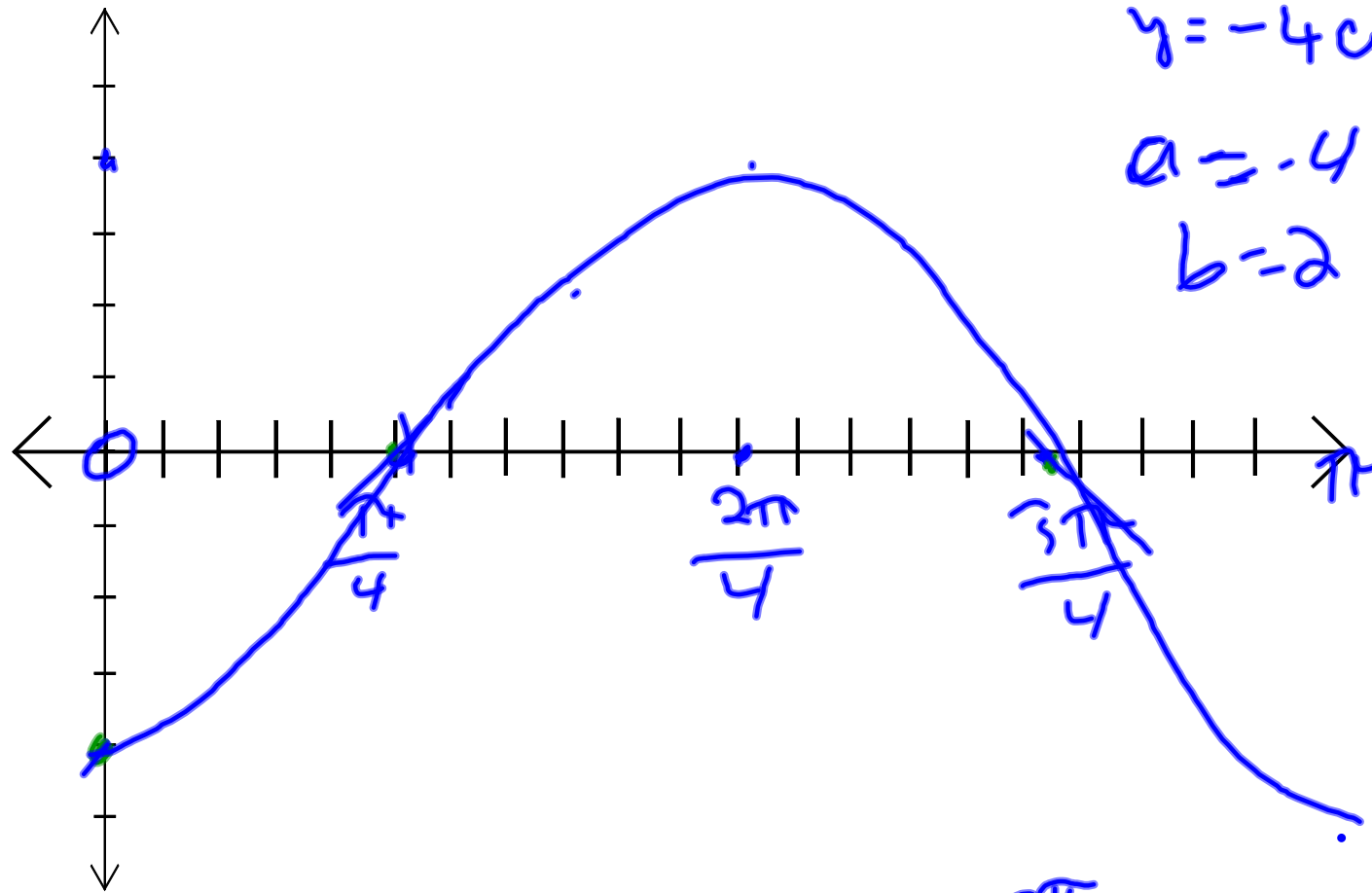
2. Period : the period is the x-distance between a point and the next corresponding point for which the value of y repeats.
 Period = $2\pi/b$

3. Values of the function for each one-fourth period



x														
y														





$$y = -4 \cos(2x)$$

$$a = -4 \quad A = 4$$

$$b = -2$$

$$p = \frac{2\pi}{2}$$

$$p = \pi$$

$$\frac{\pi}{4}$$

x	0	$\frac{\pi}{4}$	$\frac{\pi}{2}$	$\frac{3\pi}{4}$	π		
y	-4	0	4	0	-4		